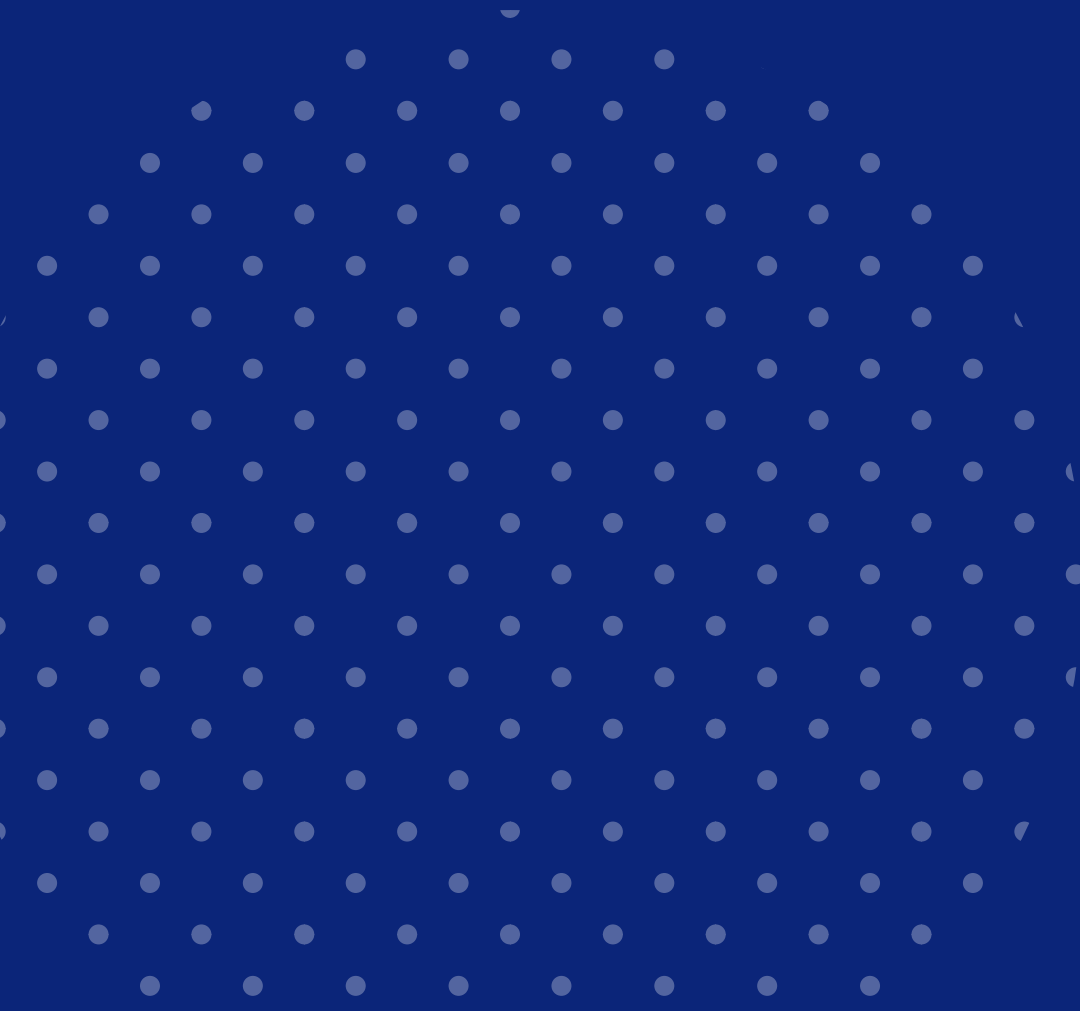


ASSEMBLY INSTRUCTIONS

PIXEL COMPACT DESK - 3 FT

11.02034.00



YOUR PACKAGE CONTAINS



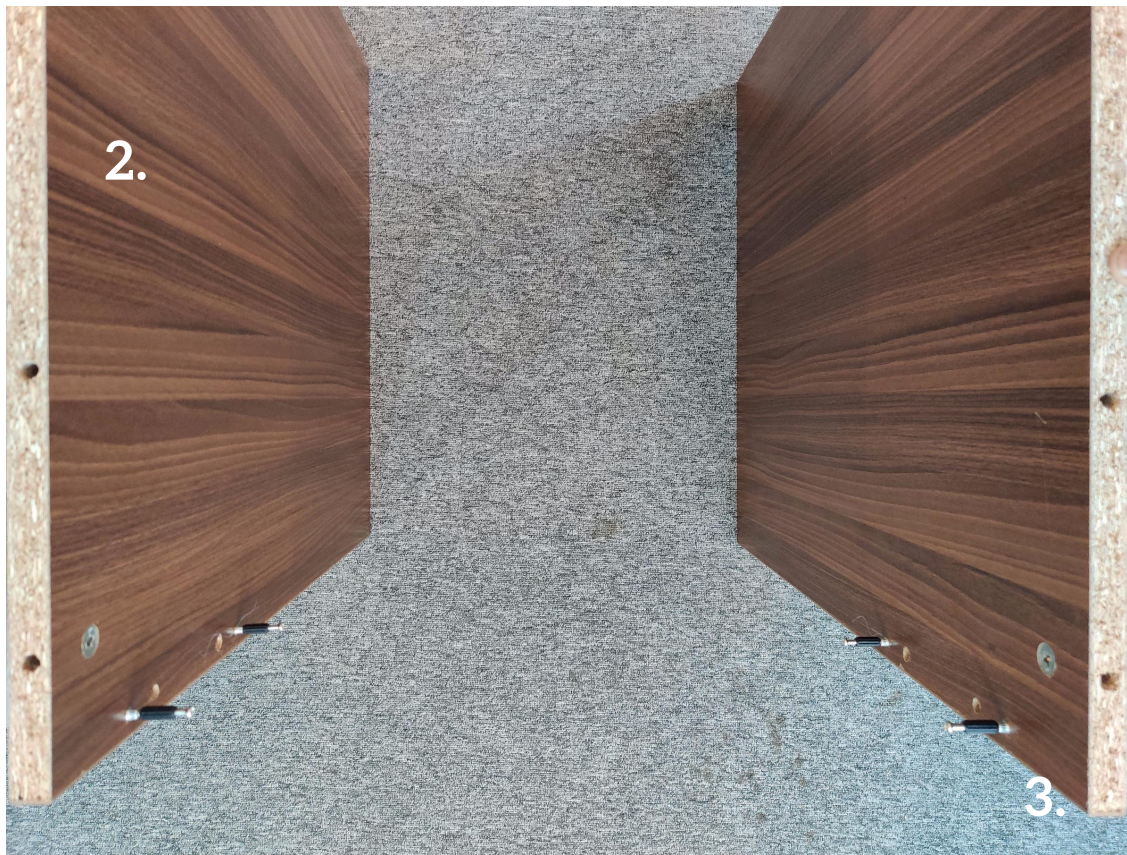
ASSEMBLY INSTRUCTIONS

1.

Insert 2 Wooden pegs into each side of the front panel as shown



ASSEMBLY INSTRUCTIONS



2.

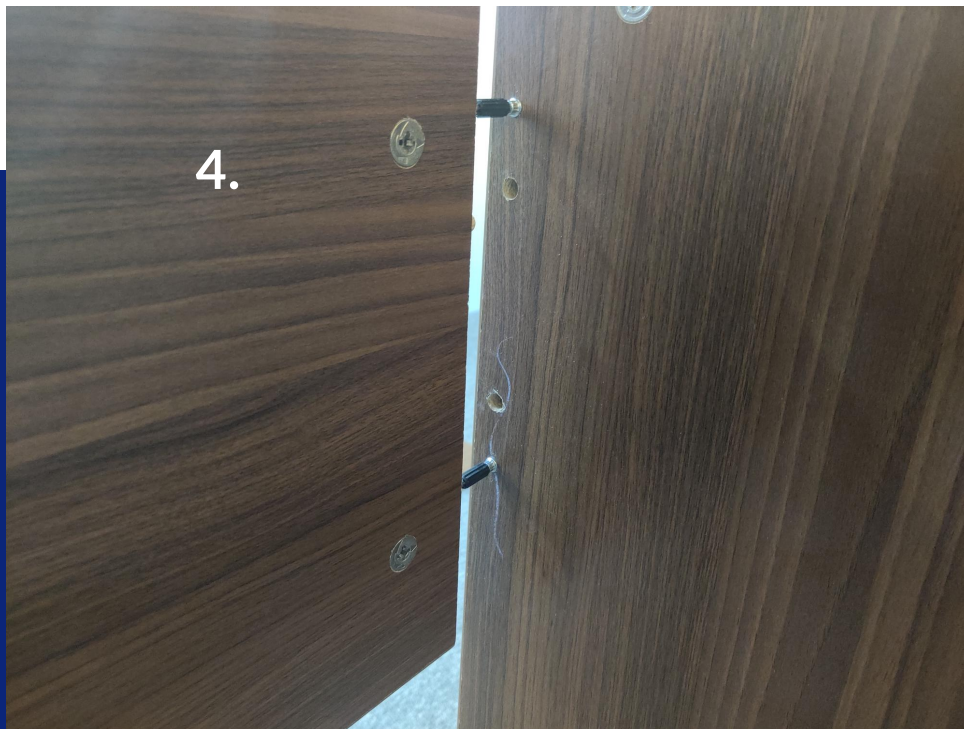
Keep the legs upright and screw in two Minifix into the 1st and 4th hole of each leg



3.

Ensure the arrow of the inbuilt screw is facing the hole as shown

ASSEMBLY INSTRUCTIONS



4.

Align and insert the front panel into the Minifix as shown



5.

Use a screwdriver and tighten the Minifix

ASSEMBLY INSTRUCTIONS



6.

Align the Minifix and wooden pegs of the tabletop and legs and insert them.

7.

Your table should look like this.



8.



8.

Use your screwdriver to tighten the inbuilt screw

Your table is ready!