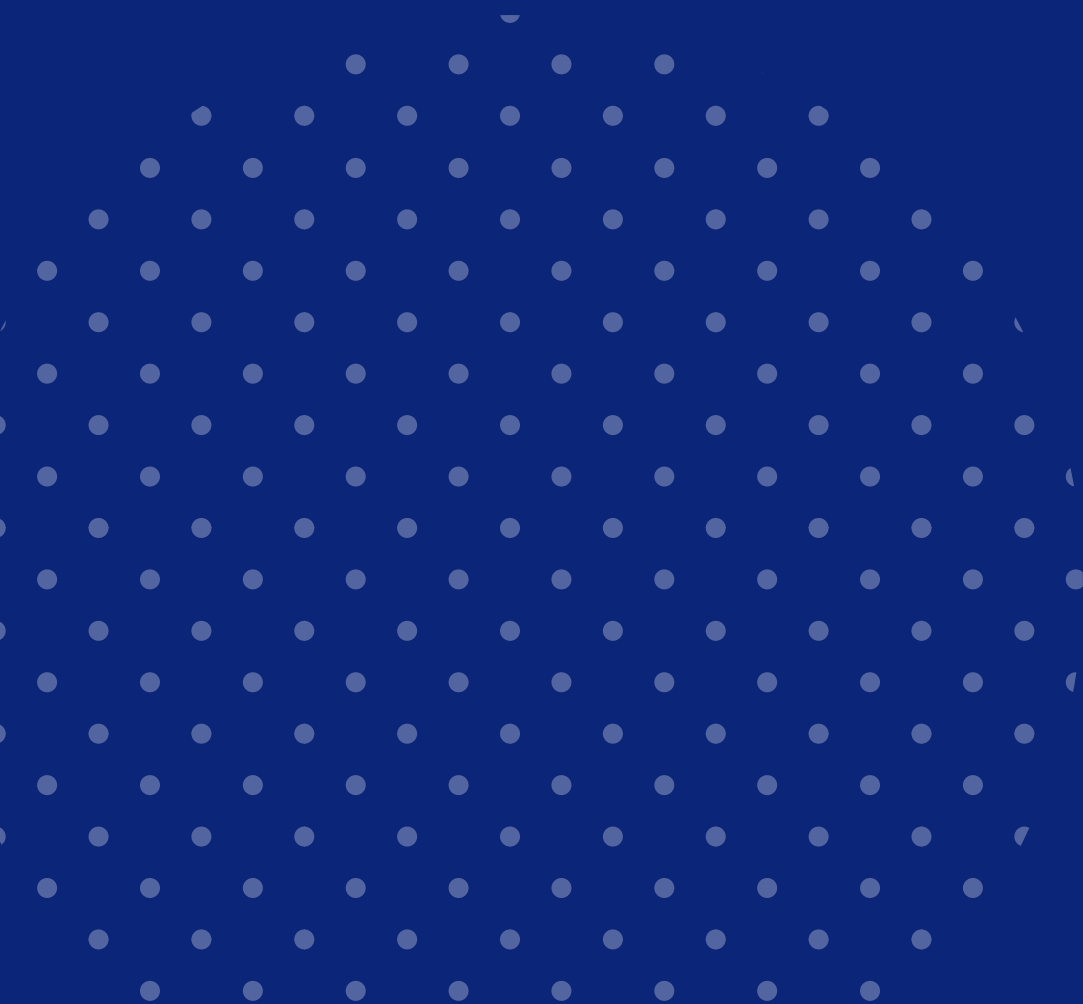


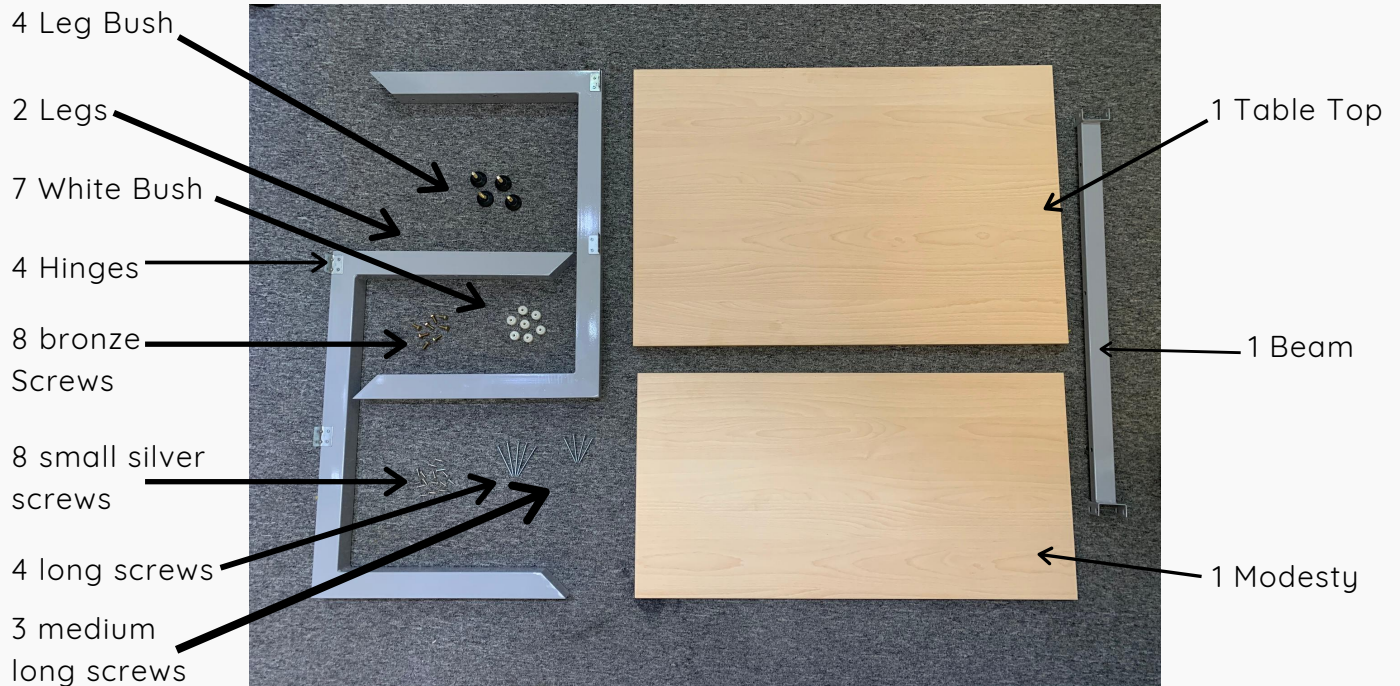
ASSEMBLY INSTRUCTIONS

TEBURU CANTILEVER DESK

11.04150.00



YOUR PACKAGE CONTAINS



ASSEMBLY INSTRUCTIONS



1.

Place the two legs as shown in the picture, with the four holes in the legs facing upwards

2.

Fix the 4 leg bushes into the 4 holes of the legs



ASSEMBLY INSTRUCTIONS

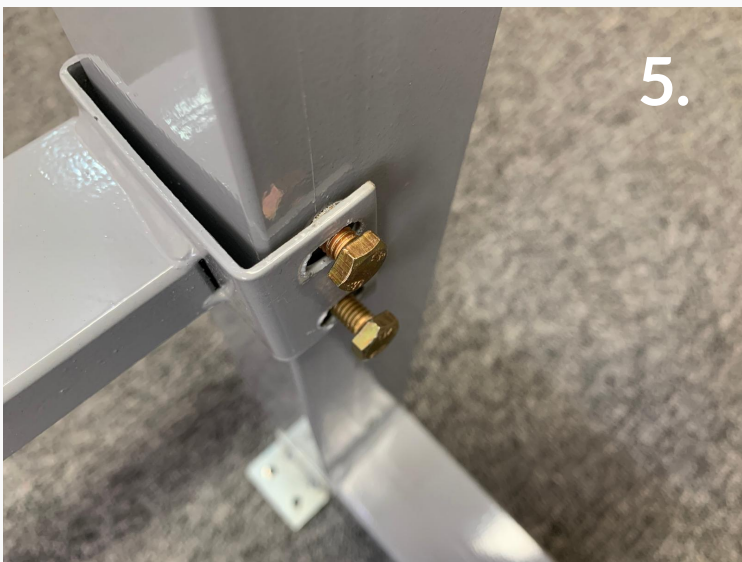


3.

Turn the legs upside down such that four holes on each leg are visible

Place the beam aligned to the holes .

4. The side of the beam with the larger holes should be facing upwards



5. Use the 8 bronze screws to fix the beam and the legs together.

Use 4 screws from the top of the beam to the top of the legs, and use the other 4 screws from the lower side of the beam and inner side of the legs



ASSEMBLY INSTRUCTIONS



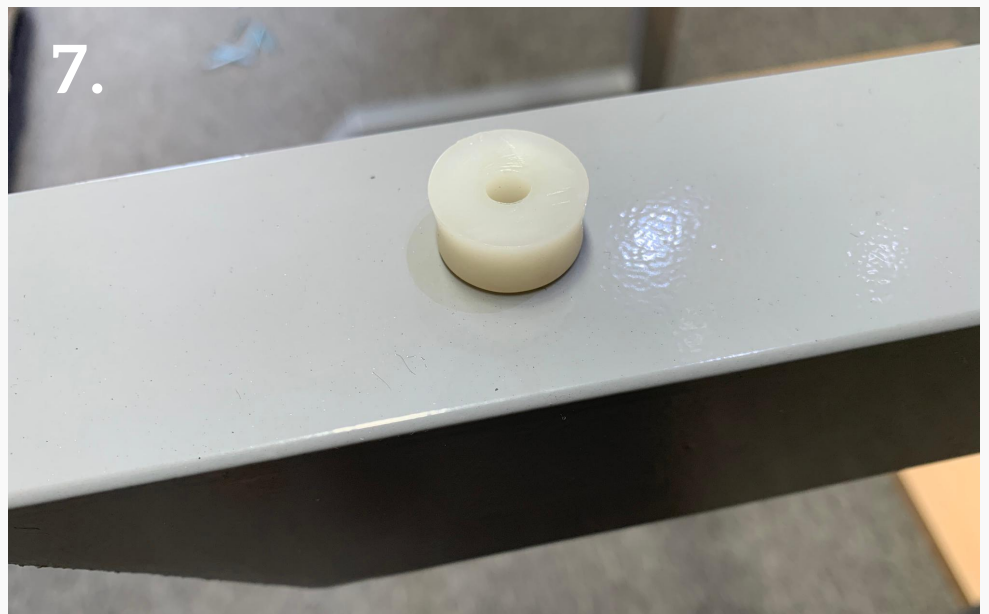
6.

Place the frame in the upright position, and place the 7 bushes along the 7 holes on the top - 3 on the beam, and 2 holes on each leg

7.

Push the narrower part of the white bush through the holes such that they are firmly fixed inside the holes.

The wider part of the bush will be visible from the top as shown in the image



8.

Place the frame such that the legs are facing upwards.

Place the modesty on the ground, and align the edges of the modesty with the outer edges of the legs

ASSEMBLY INSTRUCTIONS

9.

This is how the edges of the modesty should be aligned with the legs



10.

Use the 8 small silver screws and fix the hinges to the modesty.

Make sure that the alignment is checked before and after each screw is drilled



11.

Once all the 8 screws are fixed, the Modesty is fully fixed to the legs..



ASSEMBLY INSTRUCTIONS

12.

Place the inner side of the Tabletop facing upwards and then place the frame upside down on the Tabletop - such that the base of the legs are facing upwards.



13.

The Tabletop is slightly wider than the modesty.

Align the tabletop correctly on the frame such that the Tabletop is jutting out beyond where the Modesty ends, equally on both sides



14.

Use the 4 long silver screws and push them through the 4 holes on the two legs, on the inner side of the legs.

Be sure that the screws are going through the white bushes fixed earlier, while fixing them at this point to the top.



ASSEMBLY INSTRUCTIONS

15.

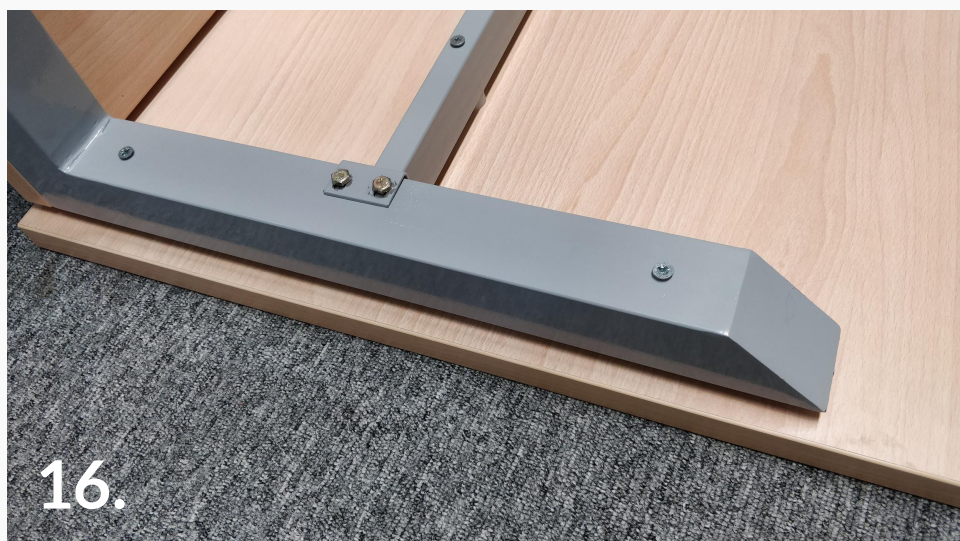
Use the 3 medium long silver screws and push them through the 4 holes on the beam, on the inner side of the beam.

Be sure that the screws are going through the white bushes fixed earlier, while fixing them at this point to the top.



16.

This is how the the frame will look once all the screws are fixed in their place



17.

Your Teburu Caltilever Desk is now ready.

For best results, use the tightening mode of the drilling machine for tightening all the screws on this desk.

While a hand-held screw driver might work for setup, it is always suggested that you use the machine for maximum stability.

